



United States Department of Agriculture

# Charles Mix County, South Dakota

10/31/17

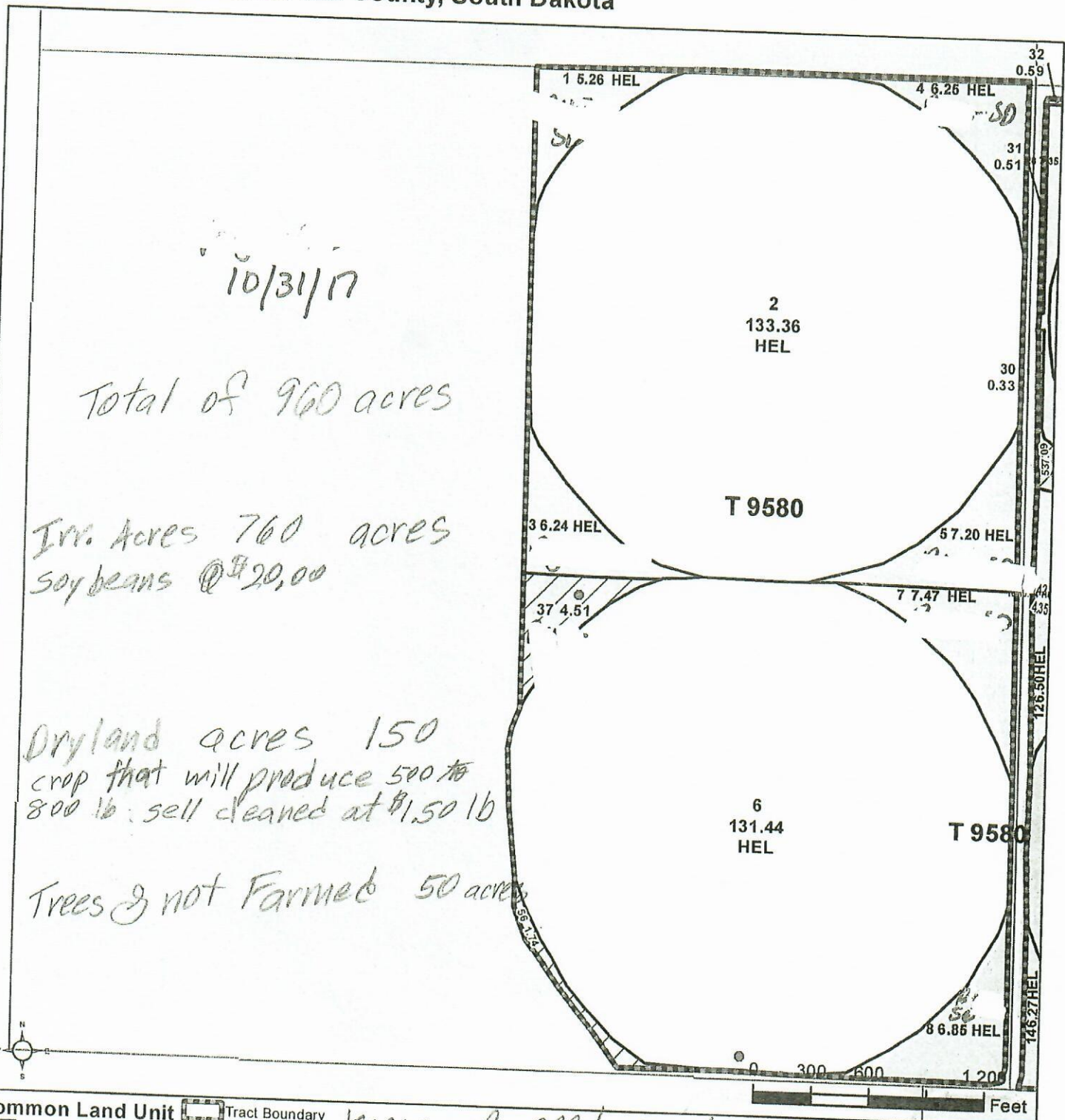
Total of 960 acres

Irr. Acres 760 acres  
soybeans @ \$20,00

Dryland acres 150  
crop that will produce 500 to 800 lb; sell cleaned at \$1.50 lb

Trees & not Farmed 50 acres

Know of good supply of manure within 250 miles at a very good price



**Common Land Unit**

- Non-Cropland
- Cropland
- Tract Boundary
- PLSS

**Wetland Determination Identifiers**

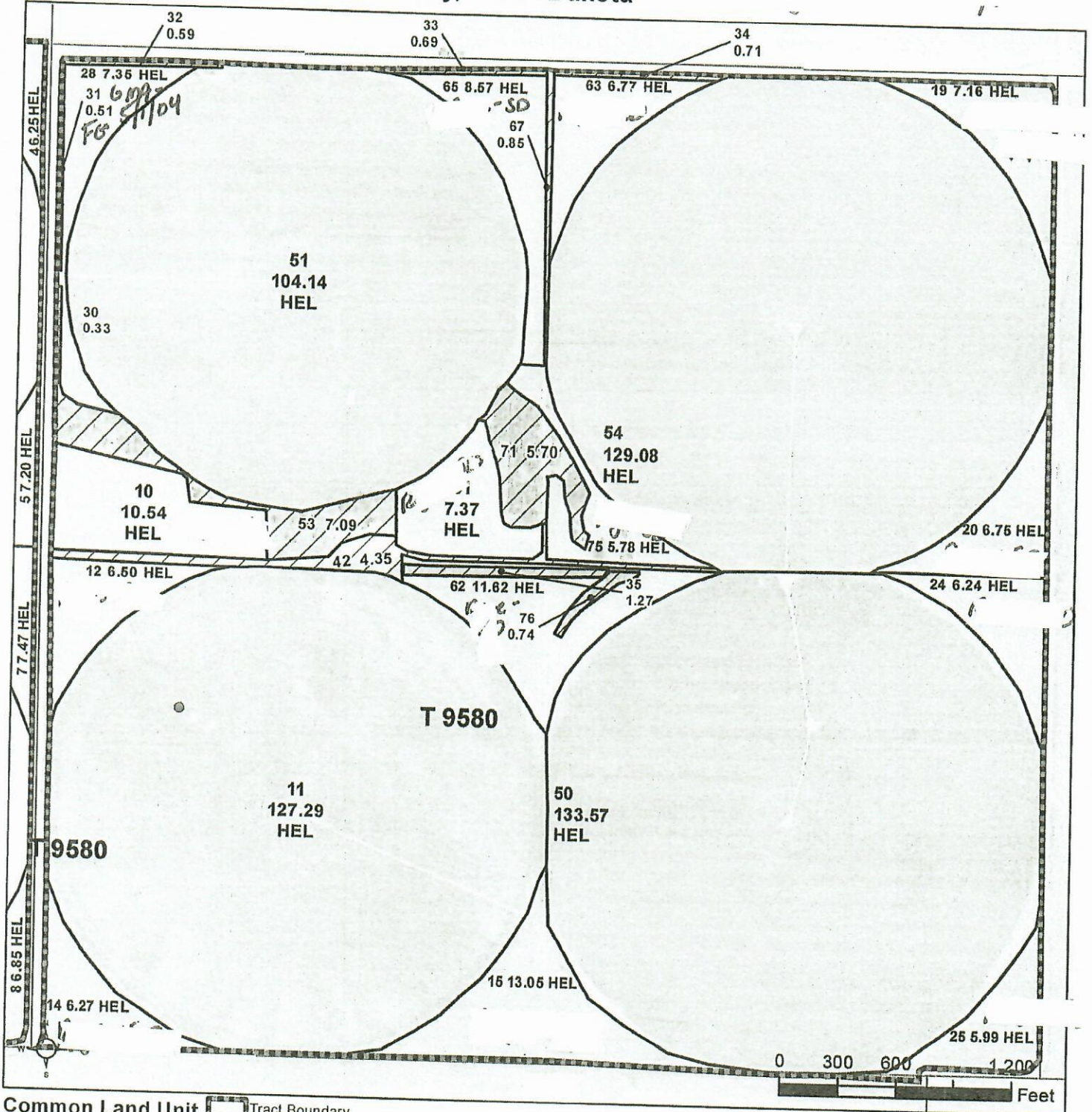
- Restricted Use
- Limited Restrictions
- Exempt from Conservation
- Compliance Provisions

2018 Program Year  
Map Created November 13, 2017  
**Farm 8972**

**31 -37N -34W**

United States Department of Agriculture (USDA) Farm Service Agency (FSA) maps are for FSA Program administration only. This map does not represent a legal survey or reflect actual ownership; rather it depicts the information provided directly from the producer and/or National Agricultural Imagery Program (NAIP) imagery. The producer accepts the data 'as is' and assumes all risks associated with its use. USDA-FSA assumes no responsibility for actual or consequential damage incurred as a result of any user's reliance on this data outside FSA Programs. Wetland identifiers do not represent the size, shape, or specific determination of the area. Refer to your original determination (CPA-026 and attached maps) for exact boundaries and determinations or contact USDA Natural Resources Conservation Service (NRCS).

Charles Mix County, South Dakota



**Common Land Unit**

- Non-Cropland
- Cropland
- Tract Boundary
- PLSS

**Wetland Determination Identifiers**

- Restricted Use
- Limited Restrictions
- Exempt from Conservation
- Compliance Provisions

100%

2018 Program Year  
Map Created November 13, 2017

Farm 8972

32 -37N -34W

United States Department of Agriculture (USDA) Farm Service Agency (FSA) maps are for FSA Program administration only. This map does not represent a legal survey or reflect actual ownership; rather it depicts the information provided directly from the producer and/or National Agricultural Imagery Program (NAIP) imagery. The producer accepts the data 'as is' and assumes all risks associated with its use. USDA-FSA assumes no responsibility for actual or consequential damage incurred as a result of any user's reliance on this data outside FSA Programs. Wetland identifiers do not represent the size, shape, or specific determination of the area. Refer to your original determination (CPA-026 and attached maps) for exact boundaries and determinations or contact USDA Natural Resources Conservation Service (NRCS).