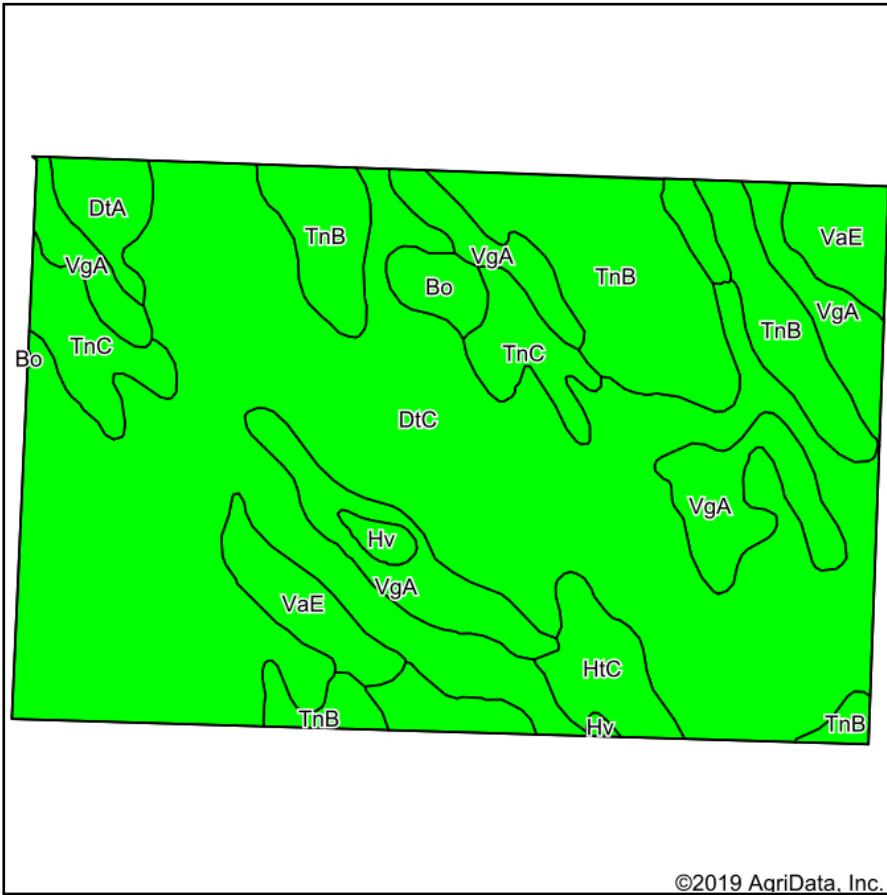
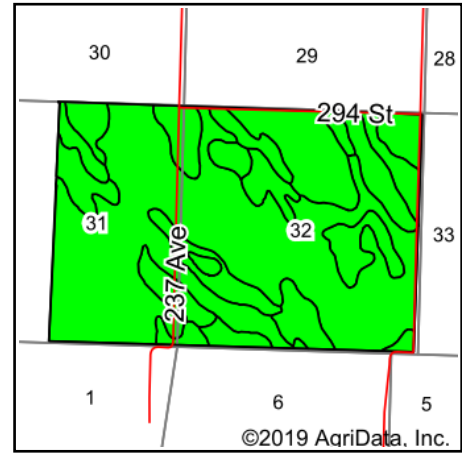


Soils Map



Soils data provided by USDA and NRCS.



State: **South Dakota**
 County: **Bennett**
 Location: **31-37N-34W**
 Township: **East Bennett**
 Acres: **960**
 Date: **6/8/2020**



Maps Provided By:



© AgriData, Inc. 2019

www.AgriDataInc.com



Area Symbol: SD007. Soil Area Version: 19														
Code	Soil Description	Acres	Percent of field	PI Legend	Non-Irr Class *c	Irr Class *c	Range Production (lbs/acre/yr)	Productivity Index	Corn	Corn Irrigated	*n NCCPI Overall	*n NCCPI Corn	*n NCCPI Small Grains	*n NCCPI Soybeans
DtC	Dunday-Anselmo complex, 3 to 9 percent slopes	534.97	55.7%		Vle	IVe	2421	39		90	27	26	25	27
TnB	Tuthill-Anselmo fine sandy loams, 0 to 5 percent slopes	142.65	14.9%		IIIe	IIIe	2411	52	30	135	35	29	31	35
VgA	Vetal-Mobridge complex, 0 to 3 percent slopes	114.68	11.9%		IIIe		2850	80	55		51	41	41	51
VaE	Valentine fine sand, 9 to 25 percent slopes	50.26	5.2%		Vle		2749	13			19	19	15	14
TnC	Tuthill-Anselmo fine sandy loams, 5 to 9 percent slopes	44.90	4.7%		IVe	IVe	2368	40	25	130	34	29	31	34
HtC	Holt-Tuthill fine sandy loams, 5 to 9 percent slopes	37.59	3.9%		IVe	IVe	2379	42	24	110	31	26	29	30
DtA	Dunday-Anselmo complex, 0 to 3 percent slopes	17.09	1.8%		IVe	IIIe	2421	52	28	110	28	26	25	28
Bo	Blown-out land	12.15	1.3%		VIIIe		235	3			20	16	15	20
Hv	Hoven silt loam, 0 to 1 percent slopes	5.71	0.6%		VIs		2102	14			6	2	6	4
Weighted Average							2454.2	44.3	13.6	82.6	*n 30.9	*n 27.7	*n 27.5	*n 30.6

*n: The aggregation method is "Weighted Average using major components"

*c: Using Capabilities Class Dominant Condition Aggregation Method

Soils data provided by USDA and NRCS.