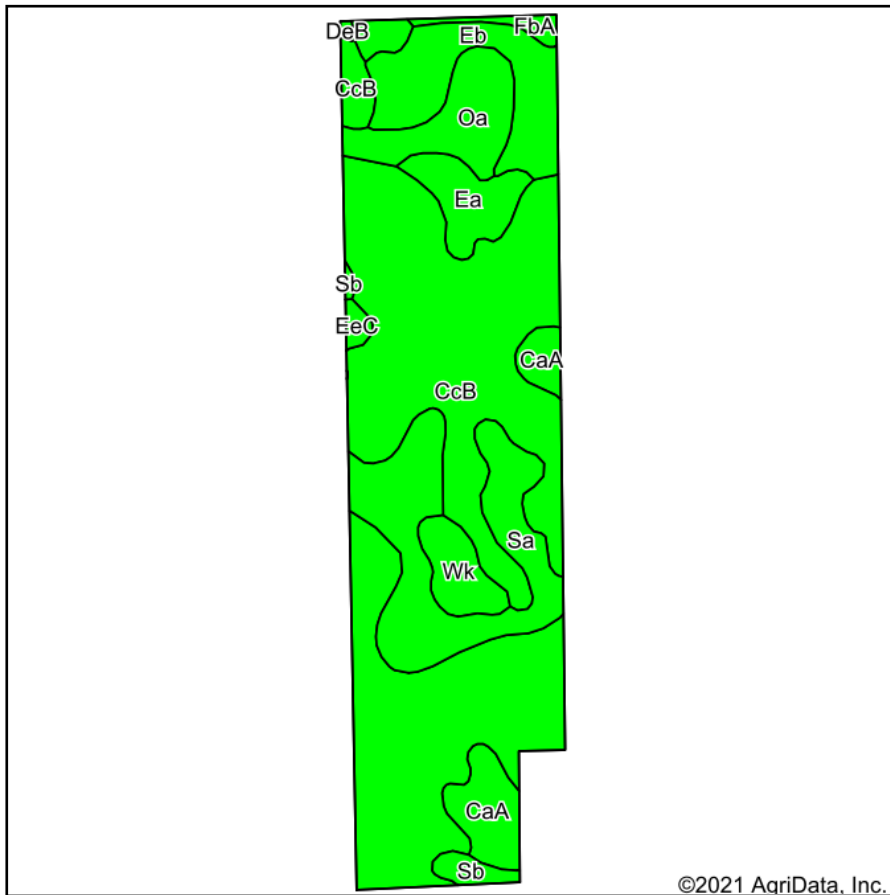
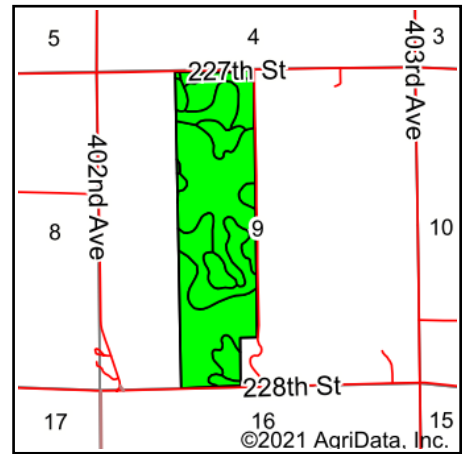


Soils Map



Soils data provided by USDA and NRCS.



State: **South Dakota**
 County: **Sanborn**
 Location: **9-107N-61W**
 Township: **Silver Creek**
 Acres: **154**
 Date: **1/10/2021**



Maps Provided By:



© AgriData, Inc. 2020

www.AgriDataInc.com



Code	Soil Description	Acres	Percent of field	PI Legend	Non-Irr Class *c	Irr Class *c	Range Production (lbs/acre/yr)	Productivity Index	Corn	Corn Irrigated	*n NCCPI Overall	*n NCCPI Corn	*n NCCPI Small Grains	*n NCCPI Soybeans
CcB	Carthage-Hand fine sandy loams, 2 to 6 percent slopes	86.01	55.9%			IIIe	3090	68	57		46	30	31	46
Sa	Shue-Davison loamy fine sands	21.69	14.1%			IVw	4604	61	58		39	27	28	39
Eb	Elsmere-Orwet complex	13.09	8.5%			IVe	4644	68	60		32	28	28	31
Oa	Orwet fine sandy loam	9.09	5.9%			IIIw	4846	67	55	100	31	25	25	31
Ea	Elsmere loamy fine sand, loamy substratum	7.62	4.9%			IVe	4824	66	60		29	28	29	28
CaA	Carthage fine sandy loam, 0 to 2 percent slopes	7.56	4.9%			IIIe	2944	69	62		47	30	31	47
Wk	Worthing silty clay loam, ponded, 0 to 1 percent slopes	4.69	3.0%			VIIIw	6895	10			7	4	6	4
Sb	Shue variant loamy fine sand	1.82	1.2%			Vw	4892	31			14	6	13	9
FbA	Forestburg loamy fine sand, 0 to 2 percent slopes	1.38	0.9%			IVe	2998	66	58		35	28	29	35
EeC	Ethan-Clarno loams, 6 to 9 percent slopes	0.84	0.5%			IVe	2861	64			63	46	38	63
DeB	Doger loamy fine sand, 2 to 6 percent slopes	0.21	0.1%			IVe	3130	35	30		27	26	25	27
Weighted Average							3752.8	64.6	54.9	5.9	*n 40.5	*n 28	*n 28.9	*n 40.3

*n: The aggregation method is "Weighted Average using all components"

*c: Using Capabilities Class Dominant Condition Aggregation Method

Soils data provided by USDA and NRCS.